

## C96S(D) ø125, ISO Cylinder, Double Acting, Single/Double Rod C96SDB125-200

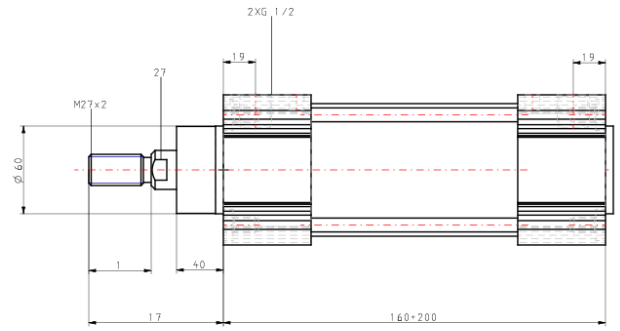
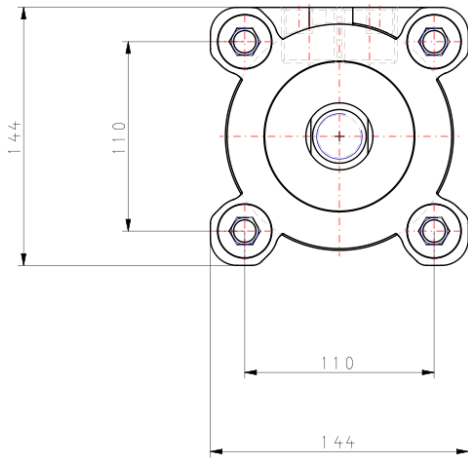
### Data Sheet

- C96-C, ISO 15552 Cylinder, Double Acting, Single/Double Rod with Air Cushion and bumper.
- New types added: Standard for double rod, Non-rotating rod for double and single rod and Smooth cylinder for single rod.
- Rod boot option added for the standard type.
- Integrated function of the air cushion and the bumper.
- Bore sizes (mm): 32 ~ 125.
- Strokes up to 2000 mm.
- Weight reduced by up to 17% thanks to the new the design of the cover and the piston.
- Many made to order available.

## Standard Specifications

Magnet	Built-in
Mounting	Basic, w/o Bracket
Bore Size	125mm
Stroke	200 mm
Rod Boot	None
Rod	Single Rod
Auto Switch	No Switch
Lead Wire or Prewired Connector	0.5m [Or None in the Case of No Switch]
Number	2 pcs. [Or None in the Case of No Switch]
Pressure medium	Compressed Air
Maximum temperature of pressure medium	70 °C
Maximum temperature of pressure medium with magnet	60 °C
Minimum temperature of pressure medium	-10 °C [without condensation]
Minimum temperature of pressure medium with magnet	-10 °C [without condensation]
Maximal operating pressure	1.0 MPa
Minimum operating pressure	0.05 MPa
Proof pressure	1.5 MPa
Maximum ambient temperature	70 °C
Maximum ambient temperature with magnet	60 °C
Minimum ambient temperature	-20 °C
Minimum ambient temperature with magnet	-10 °C
Approvals	CE
Number of pneumatic connections	2 pcs.
Pneumatic input connection	G 1/2
Pneumatic output connection	G 1/2
Mode of operation of drive	Double acting
Maximum piston speed	700 mm/s
Type of cushioning	Both Ends (Air Cushion)
Piston rod end	Male thread
Malethread of rod end	M27 x 2
Subfamily	C96S(D), ISO Cylinder, Double Acting, Single/Double Rod
Weight	9.610 kg

## Dimensions



## Additional information

Catalogue

[C96-Bb\\_EU.pdf](#)

## Related Products



### [D-M9PWL](#)

M9NW/M9PW/M9BW, 2 Colour Indication Style Solid State Switch, Direct Mounting, Grommet, In-line



### [D-M9NWL](#)

M9NW/M9PW/M9BW, 2 Colour Indication Style Solid State Switch, Direct Mounting, Grommet, In-line



### [ASR530F-04-10S](#)

ASR\*30/ASQ\*30, Air Saving Valve (PFC/QFC Valve), Metric



### [AS4201F-04-10SA](#)

AS\*2/3\*1F-A, Speed Controller with One-touch Fitting, Push Lock, Elbow/Universal Type



### [RBC](#)

RB, Shock Absorber



### [SYJ5120](#)

SYJ5000, 5 Port Solenoid Valve, Base Mounted & Body Ported



### [TU1065C-20](#)

TU, Polyurethane Tubing, Metric Size



### [KQ2H10-04AS](#)

KQ2H, One-touch Fitting White Color - Male Connector



### [ASQ530F-04-10S](#)

ASR\*30/ASQ\*30, Air Saving Valve (PFC/QFC Valve), Metric